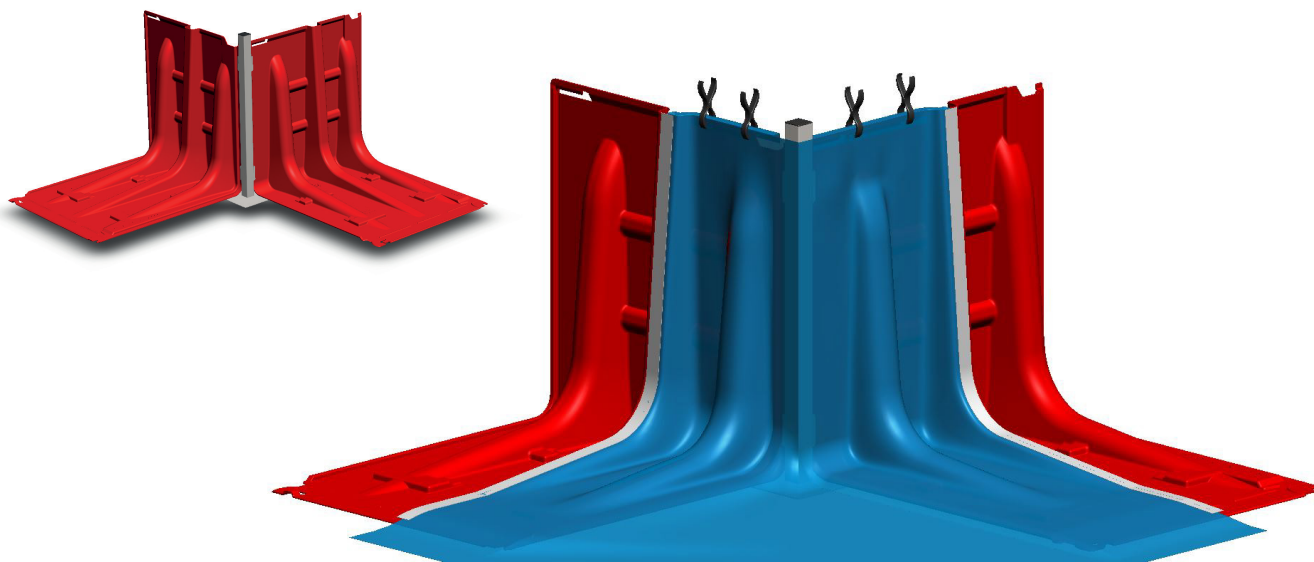


# User instructions

## 90° outward corner for NOAQ Boxwall BW102

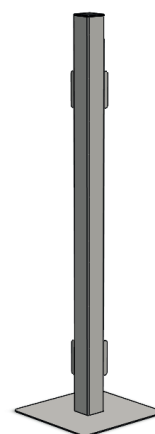
For instructions in other languages, see [www.noaq.com](http://www.noaq.com)



To be able to use a BW102 Boxwall to encircle an object, in order to protect in on all sides from flooding, straight boxwall sections can be complemented with 90° outward corners, making a rectangular flood barrier. Such corner devices consist of a metal corner pole and a cover in the form of a piece of fabric.

When making the corner, turn the next BW102 box 90° and put it close to the previous one, leaving just a small gap for the corner pole. The "ears" protruding from the pole shall touch and engage with the edges of the nearest boxes, as shown in the small image above.

Use the cover to cover the connection, and tape the edges of it to the middle bulges of the nearest boxes. Use clamps to clip the upper edge of the cover to the upper edge of the boxes. Tape and clamps are enclosed with the device. Finally, make sure that the cover fabric lies flat on the ground in front of the barrier, and secure the edge by ballasting it with a row of sandbags or the like.



*This instruction is a complement to the standard user instructions for the Boxwall BW102, which can be downloaded from [www.noaq.com](http://www.noaq.com).*